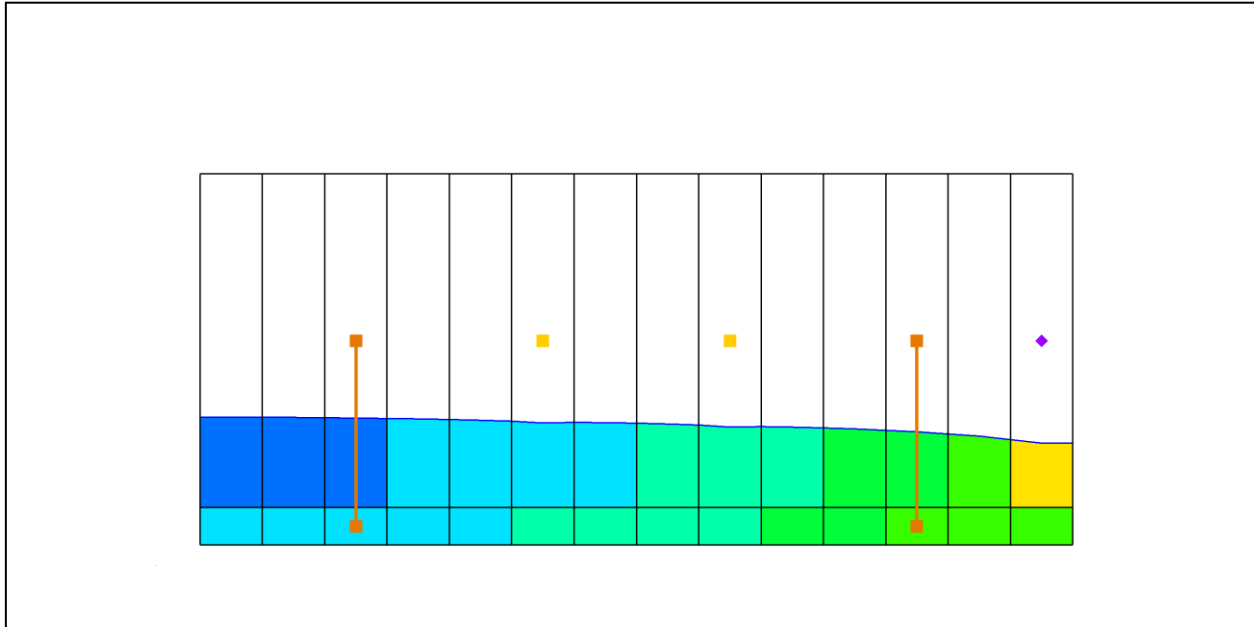


*GMS 10.1 Tutorial*

**MODFLOW-USG – CLN Package**

Use the CLN package with MODFLOW-USG in GMS



**Objectives**

Learn how to use the CLN package in GMS using the conceptual model interface to create multi-layer wells.

**Prerequisite Tutorials**

- MODFLOW – Managing Transient Data

**Required Components**

- Map Module
- Grid Module
- MODFLOW

**Time**

- 30-45 minutes



<b>1</b>	<b>Introduction</b> .....	<b>2</b>
1.1	Description of Problem .....	2
1.2	Outline.....	4
<b>2</b>	<b>Getting Started</b> .....	<b>4</b>
<b>3</b>	<b>Creating the Conceptual Model</b> .....	<b>5</b>
<b>4</b>	<b>Importing the Well Data</b> .....	<b>6</b>
<b>5</b>	<b>Setting the CLN Map Data</b> .....	<b>7</b>
<b>6</b>	<b>Mapping the CLN Wells</b> .....	<b>7</b>
<b>7</b>	<b>Saving and Running MODFLOW</b> .....	<b>9</b>
<b>8</b>	<b>Examining the Results</b> .....	<b>10</b>
<b>9</b>	<b>Conclusion</b> .....	<b>12</b>

## 1 Introduction

---

The Connected Linear Network (CLN) Process was developed for MODFLOW-USG to model one-dimensional connected features that are much smaller than a groundwater flow model's cells.<sup>1</sup> For MODFLOW-USG, the CLN Process can be used to replace wells that would use the MNW1 or MNW2 package in other versions of MODFLOW. This tutorial demonstrates how to use multi-node wells with MODFLOW-USG.

### 1.1 Description of Problem

---

The problem in this tutorial is the same simulation (Figure 1) described in the MNW1 documentation as follows:

The system consists of two aquifers that are separated by a 50-foot-thick confining unit. The upper aquifer is unconfined, has a hydraulic conductivity of 60 ft/d, and has a uniform base of 50 ft above the datum. The lower aquifer is confined and has a transmissivity of 15,000 ft<sup>2</sup>/d. Storage coefficients of 0.05 and 0.0001 were assigned to layers 1 and 2, respectively. The 66-mi<sup>2</sup> area of the test problem was divided into 21 rows of 14 columns. Uniform square cells that measured 2,500 ft on a side were used throughout the simulated area. Specified heads and drains are assigned in layer 1 and are maintained at the same elevations for all stress periods.

A period of 1,000,970 days was simulated with 5 stress periods. The first two stress periods simulated steady-state conditions, which were achieved by having each stress period be 500,000 days long. Recharge during stress periods 1 and 2 was a uniform

---

<sup>1</sup> Panday, Sorab, Langevin, C.D., Niswonger, R.G., Ibaraki, Motomu, and Hughes, J.D. (2013). MODFLOW-USG version 1: An unstructured grid version of MODFLOW for simulating groundwater flow and tightly coupled processes using a control volume finite-difference formulation: U.S. Geological Survey Techniques and Methods. Book 6, chap. A45, 66 p., <http://pubs.usgs.gov/tm/06/a45>.

7 inches per year (in./yr). No pumpage was extracted during stress period 1 but multi-node wells were simulated. About 950,000 ft<sup>3</sup>/d of pumpage was extracted during stress period 2; this is about 35 percent of the total volumetric budget. Transient conditions were simulated during stress periods 3, 4, and 5, which were periods of 60, 180, and 730 days, respectively. Uniform recharge rates of 2, 0, and 12 in./yr, respectively, were applied during stress periods 3, 4, and 5. In addition to the simulation of two multi-node wells (wells A and B), there are 15 other single-node wells that have a combined discharge of 935,350 ft<sup>3</sup>/d for stress periods 2 through 5.<sup>2</sup>

For this tutorial, the single cell wells will be modeled using the WEL package, and the multi-cell wells (Well-A and Well-B) will be modeled using the CLN package.

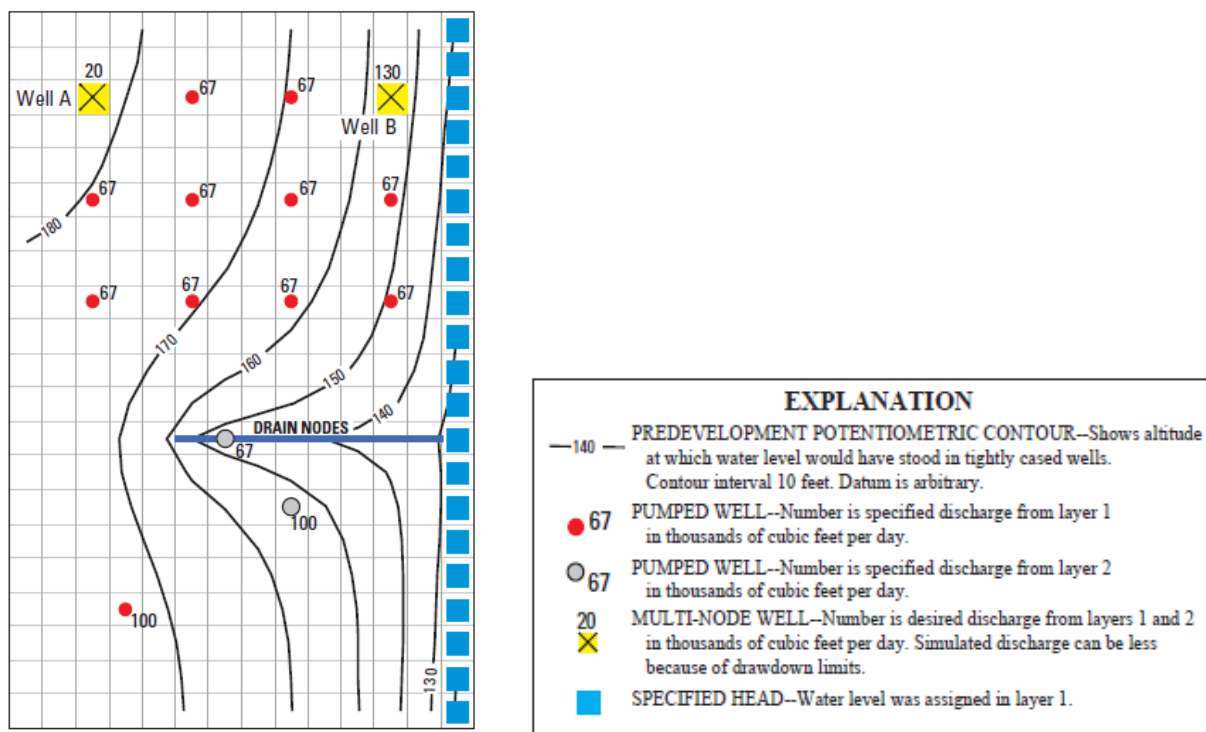


Figure 1 Flow model from MNW1 documentation<sup>3</sup>

<sup>2</sup> K.J. Halford and R.T. Hanson. (2002). User Guide for the Drawdown-Limited, Multi-Node Well (MNW) Package for the U.S. Geological Survey's Modular Three-Dimensional Finite Difference Ground-Water Flow Model, Versions MODFLOW-96 and MODFLOW-2000. Open-File Report 02-293, pp15-17. [https://water.usgs.gov/nrp/gwsoftware/modflow2000/MNW\\_text.pdf](https://water.usgs.gov/nrp/gwsoftware/modflow2000/MNW_text.pdf).

<sup>3</sup> Ibid, p.16.

---

## 1.2 Outline

---

The following topics will be demonstrated in this tutorial:


1. Opening an existing simulation that uses the MNW2 package.
2. Changing the simulation to use MODFLOW-USG.
3. Adding CLN wells to the simulation using a conceptual model.
4. Running the simulation and examine the results.

---

## 2 Getting Started

---

Do the following to get started:

1. If necessary, launch GMS.
2. If GMS is already running, select *File* / **New** to ensure that the program settings are restored to their default state.
3. Click **Open**  (or *File* / **Open...**) to bring up the *Open* dialog.
4. Browse to the *Tutorials\MODFLOW-USG\ClnPackage* directory and select “mnw2.gpr”.
5. Click **Open** to import the file and close the *Open* dialog.

The Graphics Window should appear as in Figure 2. Purple diamond-shaped symbols representing the specified head boundary conditions appear along the right column of the grid. Wells are represented by yellow squares (grouped mostly in the top half). The drain package boundary conditions are represented by the row of green circles near the center of the grid.

In order to use the CLN process, MODFLOW-USG needs to be used.

1. Select *MODFLOW* | **Global Options** to bring up the *MODFLOW Global/Basic Package* dialog.
2. In the *MODFLOW version* section, select the *USG* radio button.
3. Click **OK** to close the *MODFLOW Global/Basic Package* dialog.
4. An alert will appear, advising that MODFLOW-USG doesn't support the MNW2 package. Click **Yes** to turn off the package and continue.
5. An alert will appear, stating that MODFLOW-USG only supports the SMS solver, and the solver has been switched to that one. Click **OK** to continue.

Before making any further changes, save the project with a new name.

1. Select *File* | **Save As...** to bring up the *Save As* dialog.

2. Browse to the *Tutorials\MODFLOW-USG\ClnPackage* directory.
3. Enter “CLNwells.gpr” as the *File name*.
4. Select “Project Files (\*.gpr)” from the *Save as type* drop-down.
5. Click **Save** to save the project file and close the *Save As* dialog.

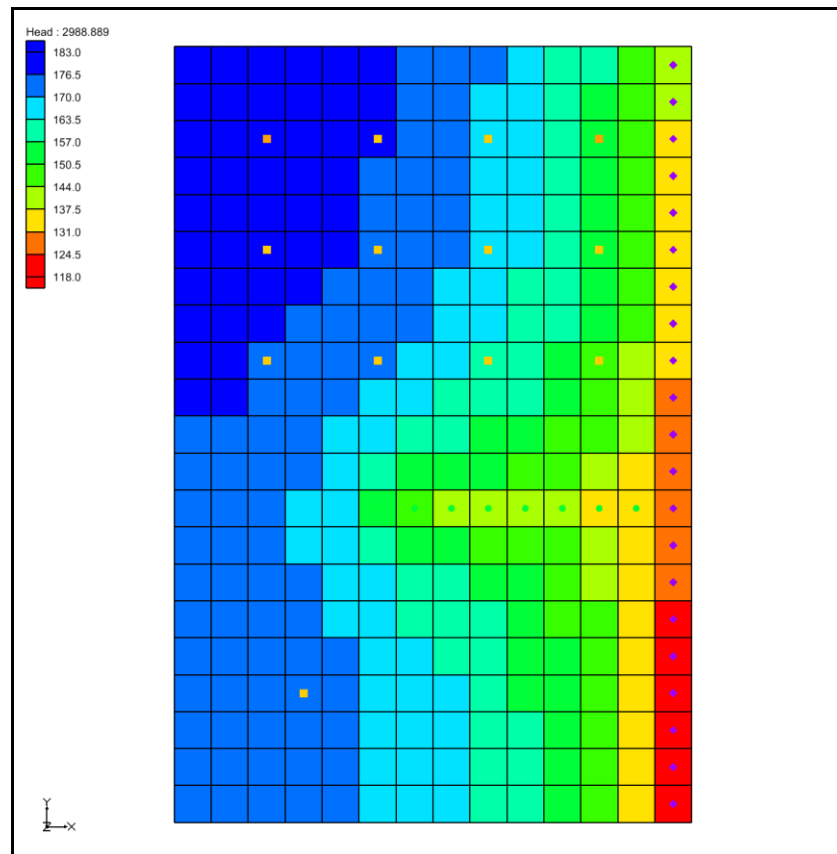




Figure 2 Imported CLN package example

### 3 Creating the Conceptual Model

Now create a conceptual model and coverage for the CLN wells by doing the following:

1. Right-click on an empty spot in the Project Explorer and select *New | Conceptual Model...* to bring up the *Conceptual Model Properties* dialog.
2. Enter “CLN” as the *Name*.
3. Select “MODFLOW” from the *Type* drop-down.
4. Select “BCF” from the *Flow package* drop-down.
5. Click **OK** to close the *Conceptual Model Properties* dialog.

A new “CLN” conceptual model should appear under Map Data in the Project Explorer.

6. Right-click on “ CLN” in the Project Explorer and select **New coverage...** to bring up the *Coverage Setup* dialog.
7. Enter “CLN wells” for the *Coverage name*.
8. In the *Sources/Sinks/BCs* section, turn on “Wells” and “Wells (CLN)”.
9. Set the *Default layer range* to go from “1” to “2”.
10. Click **OK** to close the *Coverage Setup* dialog. A new “ CLN wells” coverage should appear.

## 4 Importing the Well Data

---

Now import the well data which contains the well locations and the well screen elevations.

1. Select *File* | **Open...** to bring up the *Open* dialog.
2. Select “Text Files (\*.txt; \*.csv)” from the *Files of type* drop-down.
3. Select “well.txt” and click **Open** to close the *Open* dialog and open the *Text Import Wizard – Step 1 of 2* dialog.
4. Below the *File import options* section, turn on *Heading row* and click **Next** to go from the *Text Import Wizard – Step 1 of 2* dialog page to the *Step 2 of 2* dialog page.
5. Select “Well data” from the *GMS data type* drop-down.

The type row in the *File preview* section should fill with *Name, X, Y, Screen Top,* and *Screen Bottom* data from the imported file.

6. Click on **Finish** to import the well data and close the *Text Import Wizard – Step 2 of 2* dialog.

Wells should appear near the end and beginning of the third row from the top in Graphics Window. Now go through the same process to import the pumping data.


1. Select *File* | **Open...** to bring up the *Open* dialog.
2. Select “Text Files (\*.txt; \*.csv)” from the *Files of type* drop-down.
3. Select “pumping.txt” and click **Open** to close the *Open* dialog and open the *Text Import Wizard – Step 1 of 2* dialog.
4. Below the *File import options* section, turn on *Heading row* and click **Next** to go from the *Text Import Wizard – Step 1 of 2* dialog page to the *Step 2 of 2* dialog page.
5. Select “Pumping data” from the *GMS data type* drop-down.

6. Click **Finish** to import the pumping data and close the *Text Import Wizard – Step 2 of 2* dialog.
7. An alert will appear asking if the time series should be a step function. Click **Yes** to continue.

## 5 Setting the CLN Map Data

---



The well data has been imported with the “Wells” boundary condition type. Change the type to “Wells (CLN)” and enter some additional data.

1. Right-click on the “ CLN wells” coverage and select **Attribute Table...** to bring up the *Attribute Table* dialog.
2. Using the *All* row, set the following (scrolling to the right as needed):
  - Select “well (CLN)” from the *Type* column drop-down.
  - Select “Thiem with skin (1)” from the *IFCON* column drop-down.
  - Enter “1.0” in the *FSKIN* column.
  - Enter “1.0” in the *FANISO* column.
  - Enter “0.5” in the *FRAD* column.
  - Enter “4.31e7” in the *CONDUITK* column. The display will change this to “43100000.0”.
3. Click **OK** to exit the *Attribute Table* dialog.

## 6 Mapping the CLN Wells

---

The CLN wells in the conceptual model should now be mapped to the MODFLOW simulation.

1. Right-click on the “ CLN wells” coverage and select *Map To | MODFLOW/MODPATH*. The CLN wells should now be mapped to the MODFLOW model.
2. Uncheck the “ CLN wells” coverage in the *Project Explorer*.

The two outer wells in the third row should now be orange. The two inner wells on the third row should remain yellow (Figure 3). The values mapped to the MODFLOW-USG simulation can now be viewed.

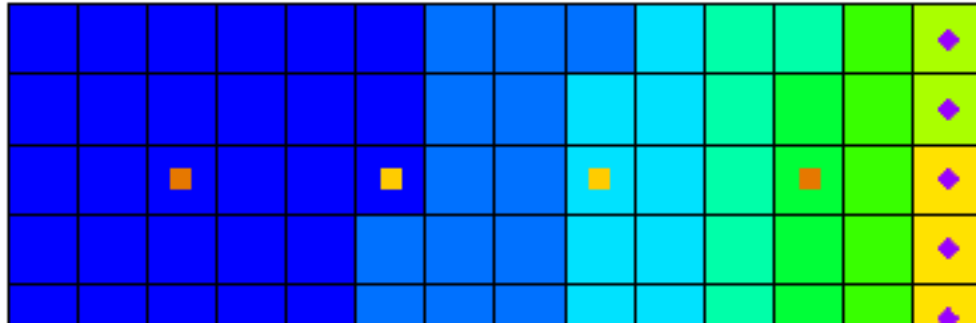


Figure 3 Mapped CLN wells are in orange, unmapped wells are in yellow

3. Select *MODFLOW* | *Optional Packages* | **CLN – Connected Linear Network...** to bring up the *CLN Process* dialog.
4. Select “SegmentNodes” from the list on the left. A table will appear to the right of the list.

The CLN Process contains nodes that can be connected together. For this simulation there are two CLN wells, and each well consists of two nodes. Each well has a unique *ClnSegmentId*, and each node has a unique *IFNO* value. Well-A is made up of the two nodes with a *ClnSegmentId* of 1, and Well-B is made up of the two nodes with a *ClnSegmentId* of 2.

5. Select “Nodes” from the list on the left. The table on the right will change to show node information.

This table shows the values for each CLN node. In the MNW2 simulation, Well-A is active during the first stress period, but isn’t pumping. When the well is active but not pumping, the well connection between the two layers allows flow between them.

When mapping multi-cell wells to MODFLOW in GMS, by default they don’t become active until the stress period where pumping begins. To make Well-A active in the first stress period, change the *IBOUND* value for its nodes.

6. In the rows with *IFNO* values of “1” and “2,” enter “1” in the *IBOUND* column (scroll to the right as needed).
7. Select “GwConnections” from the list on the left.

The table on the right will change to show the connections between the CLN process and nodes and the groundwater process cells. The *IGWNOD* column contains the cell ID of the connected groundwater node.

8. Select “ConduitTypes” from the list on the left.

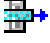
This table shows the conduit types generated for each CLN node and the associated mapped values for *FRAD* and *CONDUITK* previously entered in the Map module.

9. Select “TransientIBOUND” from the list on the left.

This table can be edited when cells become active and inactive. The nodes for Well-A have been changed to be active from the beginning of the simulation. This table includes



entries to make the nodes active beginning in stress period 2. The entries for the nodes also need to be removed from this table.

10. Click on the “1” heading cell at the left of the first table row (the row showing an *IFNO* value of “1”) to select it.
11. Click the **Delete Row**  button at the bottom of the dialog.
12. Repeat steps 10-11 to remove the row with the *IFNO* value of “2”.
13. Click **OK** to close the *CLN Process* dialog.
14. Select *MODFLOW / Optional Packages | CLN WEL – CLN Well* to bring up the *MODFLOW CLN Wells Package* dialog.



This dialog shows the wells for the CLN process along with the associated flow rates for the different stress periods. The Cell ID column toward the left is the CLN node ID (or *IFNO*).

15. Click **OK** to close the *MODFLOW CLN Wells Package* dialog.

## 7 Saving and Running MODFLOW

---

The changes should now be saved before running MODFLOW.

1. Click the **Run MODFLOW**  macro in the toolbar.
2. Select **Yes** at the prompt to save the changes before running the model and bring up the *MODFLOW* model wrapper dialog.
3. When MODFLOW finishes, check the *Read solution on exit* and *Turn on contours (if not on already)* boxes.
4. Click **Close** to close the *MODFLOW* model wrapper dialog.
5. Click **Save**  to save the project with the new solution.

The simulation should now appear as shown in Figure 4.

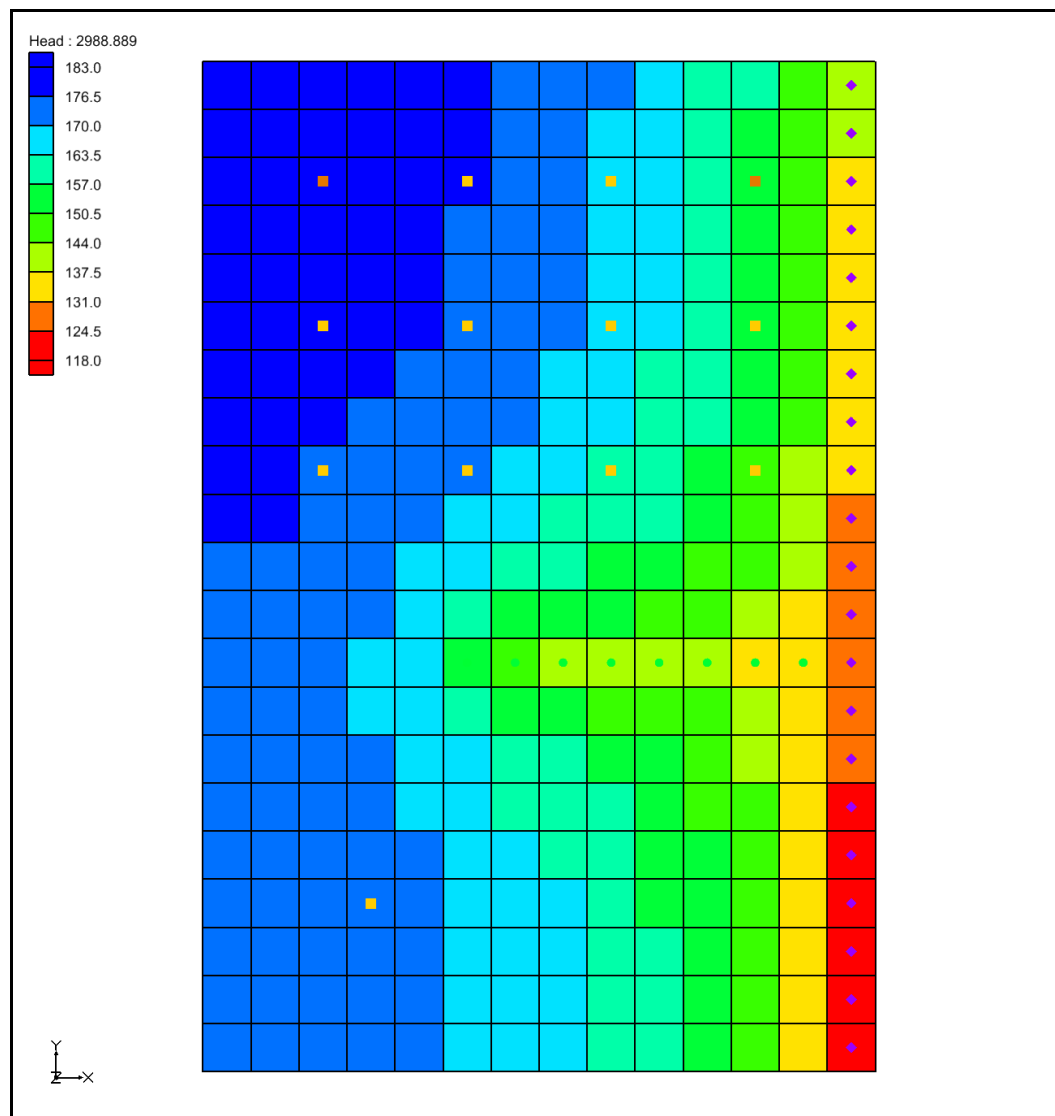
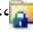



Figure 4 Solution with CLN wells

## 8 Examining the Results

Examine the solution and compare it to the solution using the MNW2 package.

1. If necessary, expand the “ CLNwells (MODFLOW)” item in the Project Explorer.
2. In the “CLNwells (MODFLOW)” folder select the “Head” dataset.
3. In the *Time Steps* window select the last time step (step 110).
4. If necessary, expand the “ mnw2 (MODFLOW)” item in the Project Explorer.
5. In the “mnw2 (MODFLOW)” folder select the “Head” dataset.

6. In the *Time Steps* window select the last time step (step 110).

In changing between the MNW2 head dataset and the CLN head dataset, notice the slight difference between the head values. The difference in drawdown can also be seen when switching between the DrawDown datasets in the solution folders.

To get a more accurate comparison of the two solutions, use the Data Calculator to calculate the difference in the head values for the last stress period.

7. Select *Edit | Dataset Calculator...* to bring up the *Data Calculator* dialog.
8. Expand the “CLNwells (MODFLOW)” folder and select the “Head” dataset.
9. Scroll the *Time steps* list to the last time step (110) and click on it to select it.
10. Double-click on the “Head” dataset under “CLNwells (MODFLOW)”. The dataset label with the time step (“d5:110”) should be added to the *Expression* field.
11. Click on **subtract** - to enter it in the *Expression* field.
12. Expand the “mnw2 (MODFLOW)” folder and select the “Head” dataset.
13. Scroll the *Time steps* list to the last time step (110) and click on it to select it.
14. Double-click on the “Head” dataset UNDER “mnw2 (MODFLOW)”. The dataset label with time step (“d3:110”) should be added to the *Expression* field.

The *Expression* field should now be “d5:110 – d3:110”.

15. Enter “difference” in the *Result* field and click on **Compute**.
16. Click on the **Done** button to exit the *Data Calculator* dialog.

A newly calculated “difference” dataset should appear in the Project Explorer giving the difference in the Head values for each cell. The maximum difference value should be approximately -0.6 ft near the upper left corner of the grid (Figure 5).

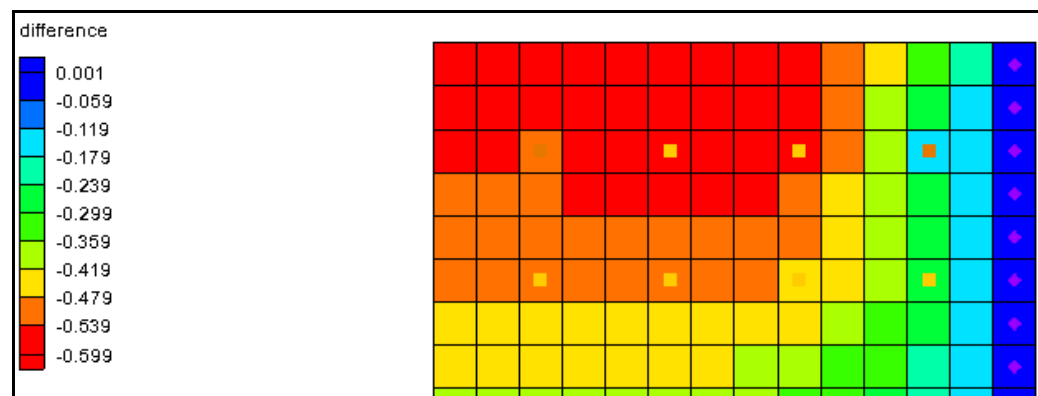


Figure 5 Final result, showing the difference in Head values

## 9 Conclusion

---

This concludes the tutorial. Here are the key concepts from this tutorial:

- GMS has the ability to create multi-cell wells using the CLN Process with the Map module.
- CLN Process values can be edited viewed in the CLN Process dialog.
- CLN well flow rates can be edited and viewed in the CLN Well dialog.